


FLEXSHADE® ROLLER SHADES **PRODUCT NAME** **PRODUCT CODE**

SMART HOME COLLECTION
by BUDGET BLINDS®
driven by **ROLLEASE ACMEDA**

SHC BATTERY **SMART HOME BATT**

Smart Home Collection Battery battery powered motorized shade offers an easy-to-install, rechargeable motorized window shade where wiring is cost prohibitive or not available.

- Long lasting, rechargeable battery.
- Control from wall switch, hand held remote control, phone app, or through home automation systems.
- Provide convenience of motorization at an attractive price point.
- Suitable for most windows. Sizes up to 12' wide.*

SHC DUAL ROLLER SHADE **SMART HOME DF**

Smart Home Collection Dual Roller Shade vertically stacks two window shades in a single unit providing a privacy fabric in back, and a decorative or solar fabric in front.



MOTORIZED FLEXSHADE® **FLEXSHADE MO**

Motorized FlexShade offers convenient control from wall switch, handheld remote control, or through home automation system.

- Uses Line Voltage Standard or RTS Motors. Other motor options are available; please contact your sales representative.
- Quiet, convenient, and functional shades for residential or commercial applications.
- Available for large windows. Sizes up to 16' wide.*

DUAL ROLLER MOTORIZED FLEXSHADE® **FLEXSHADE DFMO**

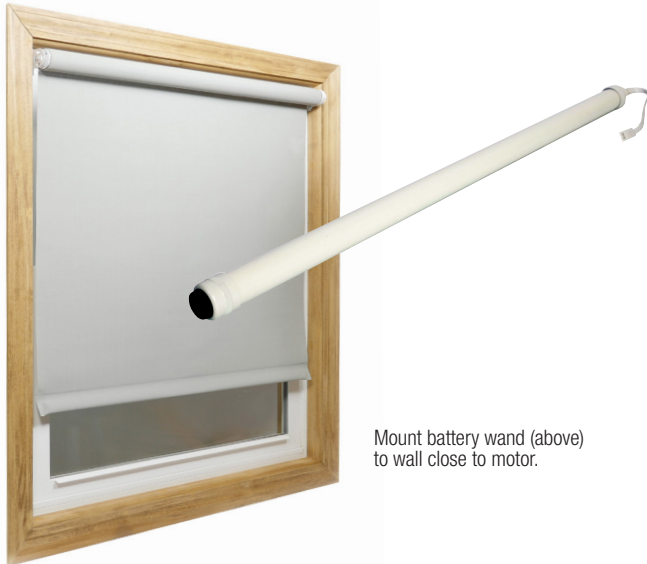
Dual Roller Motorized FlexShade vertically stacks two window shades in a single unit providing a privacy fabric in back, and a decorative or solar fabric in front.

*Depending on fabric selection.

FLEXSHADE® ROLLER SHADES

PRODUCT NAME

PRODUCT CODE



Mount battery wand (above) to wall close to motor.

BATTERY FLEXSHADE®

FLEXSHADE BA

The **Battery FlexShade** offers convenient battery operation with reloadable battery wand.

- Available in sizes from 18" up to 96".*
- Two motor options: Somfy® Battery Motor (Uses "AA" Lithium batteries, sold separately) or Somfy Rechargeable Li-Ion Battery Motor.

DUAL ROLLER BATTERY SHADE

FLEXSHADE DFBA

This **Dual Roller Battery Shade** features a reloadable battery wand and is available with either of the motors listed above. It vertically stacks two window shades in a single unit providing a privacy fabric in back, and a decorative or solar fabric in front.

- Available in sizes from 18" up to 96".*



Optional mounting.

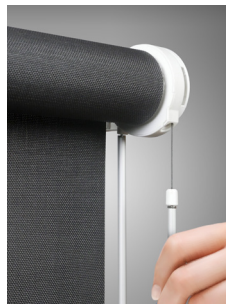
FLEXSHADE® CORDLESS

CORDLESS FLEX

Child safe by design, **FlexShade Cordless** offers a spring roller operated window shade with controlled speed return.

- This option may be added to any non-motorized shade.
- Available in sizes from 18" up to 96".*
- **PLEASE NOTE: Fascia and headboxes are not available for this product.**

FLEXSHADE® ROLLER SHADES	PRODUCT NAME	PRODUCT CODE
--------------------------	--------------	--------------



FLEXSHADE® TWIN PULL

FLEX TWIN PULL

A light-duty manual shade, the **FlexShade Twin Pull** provides all the benefits of bead chain operation in a child safe design. Shade controlled with two pull wands.

- May be added to any non-motorized shade.
- Available in sizes through 8' wide.*
- **PLEASE NOTE: Fascia and headboxes are not available for this product.**



CLUTCH-OPERATED TECHMATIC

TECHMATIC CLUTCH

Budget friendly, the **Clutch-Operated Techmatic** offers a light-duty clutch that never needs adjusting for an exciting alternative to traditional spring roller window shades

- Designed for small windows.
- Brackets or fascia options.
- Available for shade sizes up to 6' wide.*

*Depending on fabric selection.

FLEXSHADE® ROLLER SHADES

PRODUCT NAME

PRODUCT CODE



CLUTCH FLEXSHADE

FLEXSHADE CLN

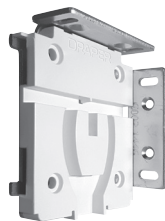
Manually-operated window shade, the **Clutch FlexShade** features flexible installation options, ease of use, and low maintenance.

- Available in sizes through 12' wide.*
- Available with all Draper hardware options.

DUAL ROLLER CLUTCH SHADE

FLEXSHADE DFCL

The manual **Dual Roller Clutch Shade** uses the Draper® standard dual clutch. One shade with two fabrics, vertically stacked in a single unit, combines privacy with decorative or solar options.



Clutch Assembly and Idler end.

CLUTCH FLEXSHADE® NEXD

FLEXSHADE NEXD

The premium **Clutch-Operated FlexShade NEXD** offers a heavy-duty, field convertible clutch for commercial or high-end residential applications.

- Available in 3 hardware sizes.
- Brackets, fascia, and cassette (cassette only available in slim size) options.
- Available in sizes through 12' wide.*

*Depending on fabric selection.

FLEXSHADE® ROLLER SHADES	PRODUCT NAME	PRODUCT CODE
--------------------------	--------------	--------------



DUAL ROLLER NEXD CLUTCH	FLEX DF NEXD
--------------------------------	---------------------

Dual Roller NEXD Clutch is a manual dual roller shade using the premier NEXD clutch. One shade with two fabrics, vertically stacked in a single unit, combines privacy with decorative or solar options.

EXTERIOR FLEXSHADE®	PRODUCT NAME	PRODUCT CODE
---------------------	--------------	--------------



EXTERIOR FLEXSHADE® - CLUTCH	EXTERIORFLEX CL
-------------------------------------	------------------------

The **Exterior Flexshade – Clutch Operated** provides outdoor solar control to create useful outdoor space in restaurants, commercial settings, or pool and patio areas by providing relief from harsh sunlight. As an exterior shade, it prevents most of the solar energy from entering a building, allowing for a more comfortable indoor environment.

- Cable guides available to secure hem bar in wind.
- Available in sizes up to 11' wide.*
- Available with universal bracket, endcaps, and fascia only.

*Depending on fabric selection.

EXTERIOR FLEXSHADE®

PRODUCT NAME

PRODUCT CODE



EXTERIOR FLEXSHADE® - CRANK

EXT FLEX CRN

Exterior Flexshade – Crank Operated reduces solar heat gain by reflecting heat before it enters the building. This creates a more comfortable indoor workspace for restaurants or commercial settings.

- Cable guides or side channels available to secure hem bar in wind.
- Only available with headbox.
- Available in sizes up to 11' wide.*



EXTERIOR FLEXSHADE® - MOTORIZED

EXT FLEX MON

With **Exterior Flexshade – Motorized**, combine ease of use and convenience with a simple wall switch or remote for outdoor solar control. Perfect for commercial or institutional settings, this shade can be quickly and quietly raised or lowered to the desired position to block unwanted sunlight.

- Cable guides or side channels available to secure hem bar in wind.
- Only available with headbox.
- Available in sizes up to 11' wide.*

*Depending on fabric selection.

EXTERIOR FLEXSHADE®

PRODUCT NAME

PRODUCT CODE



FLEXSHADE® ZIP 127

FLEX ZIP 127

FlexShade ZIP 127 features a wind resistant motorized exterior shade to cover windows or enclose outdoor spaces. Zip detail prevents fabric from pulling out of side channels or bottom rail from lifting, even in windy conditions. Ideal for large exterior spaces.

- Wind tunnel tested up to 90 mph.
- Available in sizes through 16' wide.*

SIDE CHANNELS

PRODUCT NAME

PRODUCT CODE



H Channel



U Channel



Hardware Finish Choices:
Black, White, Ivory, Charcoal Bronze, Clear Anodized. Sand in exterior hardware only.

H CHANNEL

H CHANNEL

H Channel prevents direct light gaps at sides.

- Aluminum side channel for use with **side by side shades**.
- Available in all 5 hardware finish choices.

U CHANNEL

U CHANNEL

U Channel prevents direct light gaps at sides and sills.

- Aluminum side channels for a **single shade** or with the back fabric of a **dual shade**.
- Available in all 5 hardware finish choices.

*Depending on fabric selection.

FIXED PANEL FLEXSHADE®

PRODUCT NAME

PRODUCT CODE



FIXED PANEL RECTANGULAR

FIXED PANEL REC

FIXED PANEL SQUARE

FIXED PANEL SQ

Non-operable panel window covering features a sunlight filtration system for hard-to-reach openings. It is well-suited for skylights, sloped glazing in solariums, or odd-shaped openings.

- Extruded aluminum frame available in white, black, dark bronze, or clear anodized finish.
- Available in sizes from 72" wide up to 126" high.*
- **Contact Draper for triangle, gabled, 5-sided, or arched panels.**

GRAPHIC FLEXSHADE®

DIGITALLY PRINTED SHADES



Bring spaces to life with **digital printing** on window shades.

Choose from a library of professionally-designed patterns, select a solid color, or supply your own artwork.

Contact your Draper sales representative to order.
(Digitally printed shades are not orderable on Touchpoint).

Or visit: budgetblinds.draperinc.com/shade_innovations/

*Depending on fabric selection.